



Your future's safe!



MZERO

stand-alone safety integrated controller

short form



A compact and configurable safety controller

Bringing full configuration capabilities at the cost of a



Main features

- 16 safety inputs
- 4 inputs for Start/Restart interlock, EDM or single input devices
- 4 pairs OSSD safety outputs (PNP 400 mA)
- 4 SIL 1/PL c status outputs (PNP 100 mA)
- 4 test outputs
- 64 logical operators

Part numbers

MZERO 16.4 1100005 (screw terminal blocks)
MZERO 16.4 C 1100205 (clamp terminal blocks)

Key features

MZERO is a stand-alone configurable safety hub able to manage all safety functions of a machinery or a plant, allowing cost reductions and minimal wiring.

MZERO can manage safety sensors and signals such as

Light curtains, photocells, laser scanners, emergency stops, electromechanical switches, guard-lock door switches, magnetic switches, RFID switches, mats and edges, two-hand controls and hand grip switches.

Advantages

Reducing the number of devices and wiring used and, therefore, the overall size of the project.

Speeding-up control panel construction.

Allows tamper-proof system configurations.

All logic is configured through a graphic interface. No more laborious wiring is needed as with traditional solutions.

A lower number of electromechanical components also means a better Performance Level and, therefore, a higher Safety Level.

The project report provides the actual values of PFH, DCavg and MTTFd according to EN 13849-1 and EN 62061.

stand-alone safety integrated controller

reersafety.com

Controller

standard safety relay

Additional safety relay output units

The MZERO can be hard wired to the MR units to add safety relay outputs to the system



Safety relay output units

Safety relays with guided contacts: 2 (MR2), 4 (MR4), 8 (MR8*)

NO contacts: 2 (MR2), 4 (MR4), 8 (MR8)

NC contacts: 1 (MR2), 2 (MR4), 4 (MR8) (250 VAC 6 A)

NC contacts for EDM feedback: 1 (MR2), 2 (MR4), 4 (MR8)

* MR8 allows series connection between multiple modules

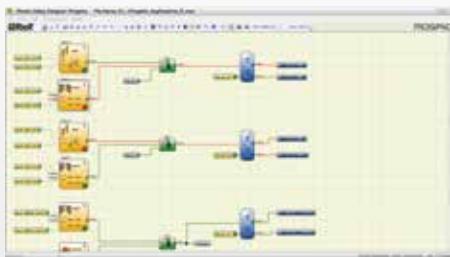
MZERO

MZERO Safety Designer

Easy-to-use designer software included with the MZERO unit.

Drag & Drop functionality allows to easily create all logic scenarios in a machine directive compliant environment.

Built-in Monitor



Built-in Simulator



Drag & Drop

User-friendly

Real-time monitor

Design validation

Simulation

Security password

Reports and log files

Project information

SAFETY LEVEL

SIL 3

SIL 3 - SILCL 3
PL e - Cat. 4

Approvals



Pending

roller

MZERO



Your future's safe!

More than 60 years of quality and innovation

Founded in Turin, Italy in 1959, ReeR distinguished itself for its strong commitment to innovation and technology.

A steady growth throughout the years allowed ReeR to become a point of reference in the safety automation industry at a worldwide level.

The Safety Division is in fact today a world leader in the development and manufacturing of safety optoelectronic sensors and controllers.

ReeR is ISO 9001, ISO 14001 and ISO 45001 certified.



ReeR SpA

Via Carcano, 32
10153 Torino

T +39 011 248 2215

F +39 011 859 867

www.reersafety.com | info@reer.it



Issue 1 - Rev. 1.0

February 2021

8946073

Brochure MZERO - English

Printed in Italy

