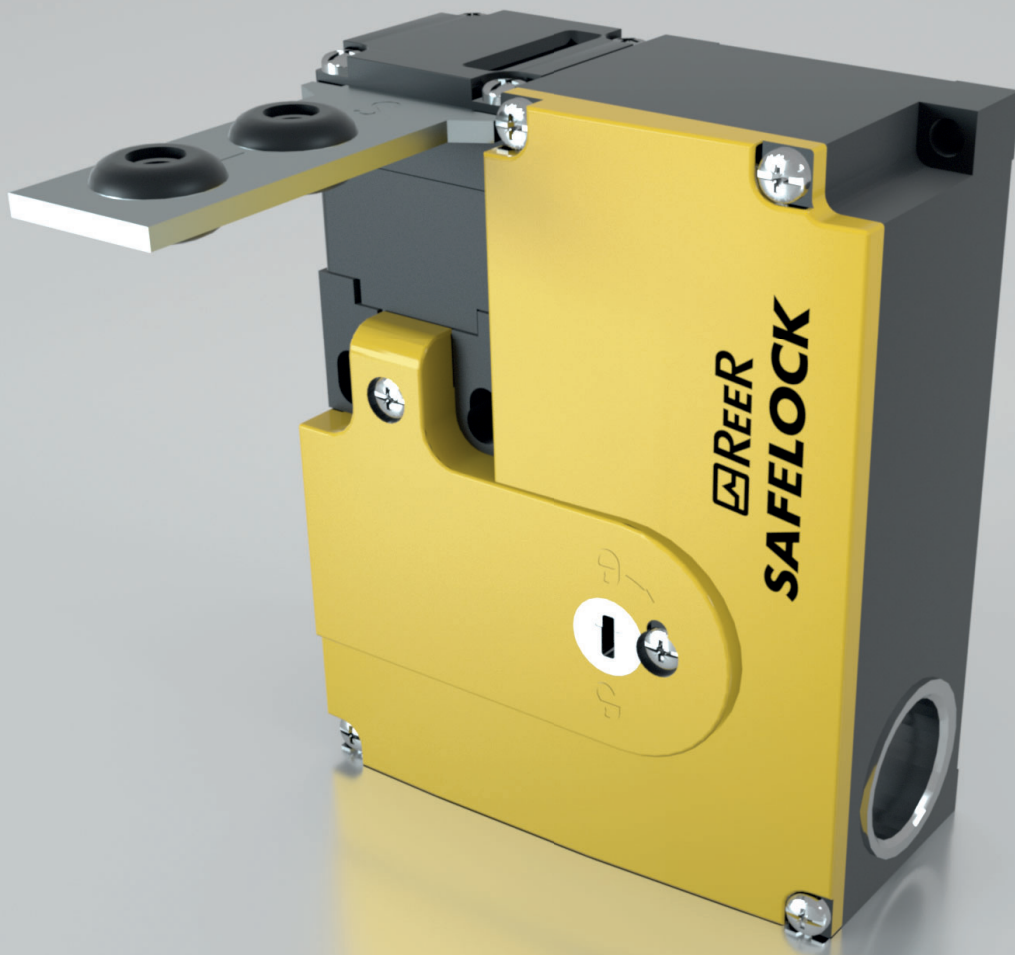




*Your future's safe!*



# **SAFELOCK**

safety switch with guard locking

*short form*



# Safety switch with guard locking and

## Safety and reliability in door-opening control



Safelock is a safety switch utilised in the protection of personnel when opening doors leading to dangerous areas. It acts by monitoring and interrupting the safety circuit during dangerous scenarios.

The solenoid locks and unlocks access to the dangerous area, guaranteeing safety until the danger has stopped.

### Available models

#### SLK-M

Retention mechanism actuated by a spring and unlocked by ON current.

Guard locking by spring force, release by applying voltage to the guard locking solenoid.

#### SLK-E

Retention mechanism actuated by ON current and unlocked by spring.

Guard locking by applying voltage to the guard locking solenoid, release by spring force.

## Characteristics

Housing	Reinforced thermoplastic
Actuating head material	Plastic or metal
Contact material	Silver alloy, gold flashed
Number of guided contacts (door position)	2
Number of guided contacts (block monitoring)	1
Switching principle	Slow-action switching contact
Approach speed	Max. 20 m/min
Actuation frequency	1200 1/h
Actuating principle	Closed-circuit current
Forces	Locking force (Fmax): ≥1 kN (plastic), ≥2 kN (metal) Locking force (FZh): 1,5 kN 0,7 kN (plastic), 1,5 kN (metal) Retention force: 20 N Extraction force: 30 N Actuating force: 35 N
Solenoid operating voltage	24 V AC/DC -15% ... +10%
Short circuit protection	4 A
Switching voltage	12 V Min a 10 mA
Switching current	1 mA Min a 24 V
Power consumption	6 W
Protection grade	IP67

### Safety levels

3 different safety functions according to the standard EN ISO 13489-1

Cat. 1 / PL c

1 Safelock + 1 safety relay AD SRE3C or 1 input of the Mosaic safety controller

Cat. 3 / PL d

1 Safelock + 1 safety relay AD SRE3C or 2 inputs of the Mosaic safety controller + fault exclusion according to the standard (EN ISO 13849-2)

1 Safelock + 2 Magnus RFID + safety relay AD SR1 or 2 inputs of the Mosaic safety controller

2 Safelock + 1 safety relay AD SRE3C or 2 inputs of the Mosaic safety controller

Cat. 4 / PL e

2 Safelock + 2 safety relay AD SRE4C or 4 inputs of the Mosaic safety controller

# safety switch with guard locking

[www.reersafety.com](http://www.reersafety.com)

# electromagnetic lock










## Approvals

Directives  
Machine Directive 2006/42/CE

## Standards

EN 60947-5-1:2004 + Cor.:2005 + A1:2009  
EN 1088:1995 + A2:2008  
EN 14119:2013

## Part numbers

Part number	Model	Description
1290100	SLK-M-P-2NC-24	Safelock with mechanical block and plastic actuating head. Contacts: 2 NC, feedback 1 NC
1290102 *	SLK-M-M-2NC-24	Safelock with mechanical block and metal actuating head. Contacts: 2 NC, feedback 1 NC
1290104	SLK-E-P-2NC-24	Safelock with electrical block and plastic actuating head. Contacts: 2 NC, feedback 1 NC
1290106 *	SLK-E-M-2NC-24	Safelock with electrical block and metal actuating head. Contacts: 2 NC, feedback 1 NC
1290302	ACT-S-S-RB	 Straight actuator. With rubber bush, overtravel 5 mm (incl. 2 safety screws M4 x 14)
1290303	ACT-S-A-RB	 Angled actuator. With rubber bush, overtravel 5 mm (incl. 2 safety screws M4 x 14)
1290304	ACT-S-H-TB	 Hinged actuator. For top and bottom hinged doors, overtravel 5 mm (incl. 2 safety screws M5 x 25)
1290305	ACT-S-H-LR	 Hinged actuator. For left and right hinged doors, overtravel 5 mm (incl. 2 safety screws M5 x 10)
1290306 *	ACT-F-S-RB	 Straight actuator, for insertion funnel. With rubber bush, overtravel 5 mm (incl. 2 safety screws M4 x 14)
1290307 *	ACT-F-A-RB	 Angled actuator, for insertion funnel. With rubber bush, overtravel 5 mm (incl. 2 safety screws M4 x 14)
1290308 *	ACT-F-H-TB	 Hinged actuator, for insertion funnel. For top and bottom hinged doors, overtravel 5 mm (incl. 2 safety screws M5 x 25)
1290309 *	ACT-FH-LR	 Hinged actuator, for insertion funnel. For left and right hinged doors, overtravel 5 mm (incl. 2 safety screws M5 x 10)
1290311 *	ACT-F-IF	 Insertion funnel (incl. 2 screws).

\* Contact ReeR to check availability

# SAFELOCK



*Your future's safe!*

### More than 60 years of quality and innovation

Founded in Turin, Italy in 1959, ReeR distinguished itself for its strong commitment to innovation and technology.

A steady growth throughout the years allowed ReeR to become a point of reference in the safety automation industry at a worldwide level.

The Safety Division is in fact today a world leader in the development and manufacturing of safety optoelectronic sensors and controllers.

ReeR is ISO 9001, ISO 14001 and ISO 45001 certified.



### ReeR SpA

Via Carcano, 32  
10153 Torino, Italy

T +39 011 248 2215  
F +39 011 859 867

[www.reersafety.com](http://www.reersafety.com) | [info@reer.it](mailto:info@reer.it)



Issue 2 - Rev. 1.3  
February 2020  
8946246

Brochure SAFELOCK - English

*Printed in Italy*

