



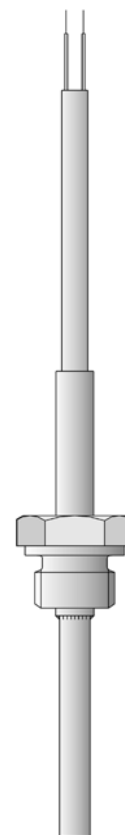
Screw-in resistance thermometers with connecting cable

- for temperatures from -50 to +400°C
- as single or twin resistance thermometer
- in 2-wire, 3-wire or 4-wire circuit
- connecting cable in PVC, silicone, Teflon or with metal braiding

Screw-in resistance thermometers are mainly used for measuring temperatures in liquids and gases. An important selection criterion is their reliable sealing against both negative and positive pressures. Applications include HVAC, refrigeration, heating installations, ovens, furnaces and plant engineering.

Depending on the version, the connecting cables are suitable for use in dry and humid areas within the temperature range -50 to +350°C. The junction between cable and protection tube incorporates strain relief. A cable protector can be supplied as an option.

The measuring insert is normally fitted with a Pt100 temperature sensor to EN 60 751, Class B in 2-wire circuit. Versions with Pt500 or Pt1000 are also available. In addition, there is a choice of 3-wire or 4-wire circuit connections.



Technical data

Connection

Connecting cable

available with cable ends as: bare wires, with ferrules, receptacles or multipole connector
PVC, ambient temperature -5 to +80°C (+105°C)
silicone, ambient temperature -50 to +180°C
Teflon, ambient temperature -190 to +260°C
metal braiding, ambient temperature -50 to +350°C
connecting cable can optionally be supplied with shielding
thread, stainless steel 1.4571

Process connection

Protection tube

stainless steel 1.4571 (Type 902005/30 Inconel 2.4816), 5mm, 5.4mm, 6mm and 8mm dia.

Measuring insert

Pt100 temperature sensor, EN 60 751, Cl. B, 2-wire circuit

Response times

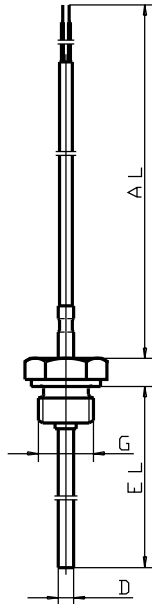
$t_{0.5}$ approx. 2sec, $t_{0.9}$ approx. 6sec, in water 0.2m/sec, 6mm dia.

Accessories

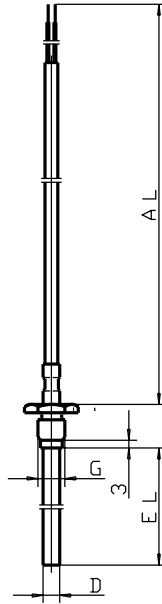
pocket, see Data Sheet 90.9721 and 90.2440



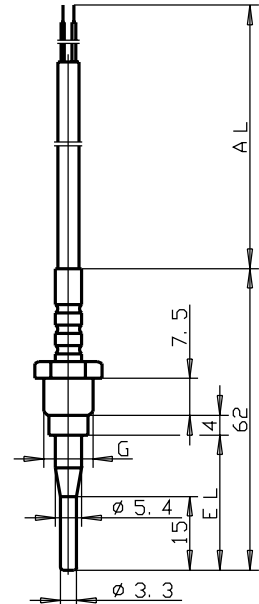
Dimensions



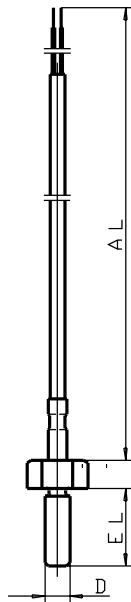
Type 902005/10



Type 902005/20



Type 902005/30



Type 902005/40

Delivery address: Mackenrodtstraße 14,
36039 Fulda, Germany
Postal address: 36035 Fulda, Germany
Phone: +49 661 6003-0
Fax: +49 661 6003-607
e-mail: mail@jumo.net
Internet: www.jumo.net

JUMO House
Temple Bank, Riverway
Harlow, Essex CM 20 2TT, UK
Phone: +44 1279 635533
Fax: +44 1279 635262
e-mail: sales@jumo.co.uk
Internet: www.jumo.co.uk

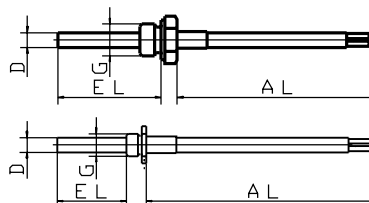
885 Fox Chase, Suite 103
Coatesville PA 19320, USA
Phone: 610-380-8002
1-800-554-JUMO
Fax: 610-380-8009
e-mail: info@JumoUSA.com
Internet: www.JumoUSA.com



Order details: Screw-in resistance thermometers with connecting cable

(1) Basic version

902005/10	Screw-in resistance thermometer with fixed screw fitting
902005/20	Screw-in resistance thermometer with loose screw fitting



(2) Operating temperature in °C / connecting cable

x	x	130	-200 to +400°C / metal braiding
x	x	380	-50 to +200°C / silicone
x	x	386	-50 to +260°C / Teflon
x	x	402	-50 to +400°C / metal braiding
x	x	724	-5 to +80°C / PVC
x	x	912	5 to 105°C / PVC (only with 1 x 2-wire or 3-wire circuit)

(3) Measuring insert

x	x	1001	1 x Pt100 in 3-wire circuit
x	x	1003	1 x Pt100 in 2-wire circuit
x	x	1011	1 x Pt100 in 4-wire circuit
x	x	2001	2 x Pt100 in 3-wire circuit
x	x	2003	2 x Pt100 in 2-wire circuit

(4) Tolerance class to EN 60 751

x	x	1	Class B (standard)
x	x	2	Class A

(5) Protection tube diameter D in mm

x	x	5	5mm
x	x	6	6mm

(6) Fitting length EL in mm (50 ≤ EL ≤ 500)

x		17	17mm
x		37	37mm
x	x	50	50mm
x	x	100	100mm
x	x	137	137mm
x	x	200	200mm
x	x	250	250mm
x	x	...	please specify in plain text (50mm steps)

(7) Process connection

x		102	thread 1/4" pipe
x		104	thread 1/2" pipe
x	x	114	thread M 10 x 1

(8) Connecting cable end

x	x	03	bare cable ends
x	x	11	ferrules to DIN 46 228 Part 4 (standard)
x	x	13	receptacle 6.3 to DIN 46 247
x	x	80	multipole connector (please specify type in plain text)
x	x	99	to customer specification

(9) Connecting cable length AL in mm (500 ≤ AL ≤ 500000)

x	x	2500	2500mm
x	x	...	please specify in plain text (500mm steps)

(10) Extra codes

x	x	000	no extra code
x	x	310	stepped protection tube
x	x	315	cable protector: coil
x	x	316	cable protector: tube
x	x	317	shielded connecting cable

Order code (1) (2) (3) (4) (5) (6) (7) (8) (9) (10) ...
 Order example 902005/10 - 380 - 1001 - 1 - 6 - 100 - 104 - 11 - 2500 / 000¹

1. List extra codes in sequence, separated by commas.

Delivery address: Mackenrodtstraße 14,
36039 Fulda, Germany
Postal address: 36035 Fulda, Germany
Phone: +49 661 6003-0
Fax: +49 661 6003-607
e-mail: mail@jumo.net
Internet: www.jumo.net

JUMO House
Temple Bank, Riverway
Harlow, Essex CM 20 2TT, UK
Phone: +44 1279 635533
Fax: +44 1279 635262
e-mail: sales@jumo.co.uk
Internet: www.jumo.co.uk

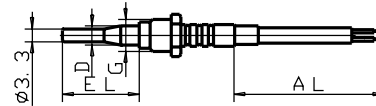
885 Fox Chase, Suite 103
Coatesville PA 19320, USA
Phone: 610-380-8002
1-800-554-JUMO
Fax: 610-380-8009
e-mail: info@JumoUSA.com
Internet: www.JumoUSA.com



Order details: Screw-in resistance thermometers with connecting cable

(1) Basic version

902005/30 Screw-in resistance thermometer with loose screw fitting and stepped protection tube



		(2) Operating temperature in °C / connecting cable
x	380	-50 to +200°C / silicone
		(3) Measuring insert
x	1001	1 x Pt100 in 3-wire circuit
x	1003	1 x Pt100 in 2-wire circuit
		(4) Tolerance class to EN 60 751
x	1	Class B (standard)
x	2	Class A
		(5) Protection tube diameter D in mm
x	5.4	5.4mm dia. stepped down to 3.3mm
		(6) Fitting length EL in mm
x	27.5	27.5mm
		(7) Process connection
x	114	thread M 10 x 1
		(8) Connecting cable end
x	03	bare cable ends
x	11	ferrules to DIN 46 228 Part 4 (standard)
x	13	receptacle 6.3 to DIN 46 247
x	80	multipole connector (please specify type in plain text)
x	99	to customer specification
		(9) Connecting cable length AL in mm (500 ≤ AL ≤ 500000)
x	2500	2500mm
x	...	please specify in plain text (500mm steps)
		(10) Extra codes
x	000	no extra code
x	315	cable protector: coil
x	316	cable protector: tube
x	317	shielded connecting cable

Order code **(1)** - **(2)** - **(3)** - **(4)** - **(5)** - **(6)** - **(7)** - **(8)** - **(9)** / **(10)** ,...

Order example 902005/30 - 380 - 1003 - 1 - 5.4 - 27.5 - 114 - 11 - 2500 / 000¹

1. List extra codes in sequence, separated by commas.

Delivery address: Mackenrodtstraße 14,
36039 Fulda, Germany
Postal address: 36035 Fulda, Germany
Phone: +49 661 6003-0
Fax: +49 661 6003-607
e-mail: mail@jumo.net
Internet: www.jumo.net

JUMO House
Temple Bank, Riverway
Harlow, Essex CM 20 2TT, UK
Phone: +44 1279 635533
Fax: +44 1279 635262
e-mail: sales@jumo.co.uk
Internet: www.jumo.co.uk

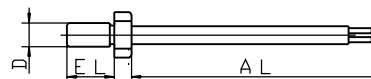
885 Fox Chase, Suite 103
Coatesville PA 19320, USA
Phone: 610-380-8002
1-800-554-JUMO
Fax: 610-380-8009
e-mail: info@JumoUSA.com
Internet: www.JumoUSA.com



Order details: Screw-in resistance thermometers with connecting cable

(1) Basic version

902005/40 Screw-in resistance thermometer, screw-in protection tube



(2) Operating temperature in °C / connecting cable

- x 380 -50 to +200°C / silicone
- x 390 -50 to +300°C / metal braiding
- x 724 -5 to +80°C / PVC
- x 912 5 to 105°C / PVC (only with 1 x 2-wire or 3-wire circuit)

(3) Measuring insert

- x 1001 1 x Pt100 in 3-wire circuit
- x 1003 1 x Pt100 in 2-wire circuit

(4) Tolerance class to EN 60 751

- x 1 Class B (standard)
- x 2 Class A

(5) Protection tube diameter D in mm

- x 8 M 8

(6) Fitting length EL in mm

- x 25 25mm

(7) Process connection

- x 111 thread M 8

(8) Connecting cable end

- x 03 bare cable ends
- x 11 ferrules to DIN 46 228 Part 4 (standard)
- x 13 receptacle 6.3 to DIN 46 247
- x 80 multipole connector (please specify type in plain text)
- x 99 to customer specification

(9) Connecting cable length AL in mm (500 ≤ AL ≤ 50000)

- x 2500 2500mm
- x ... please specify in plain text (500mm steps)

(10) Extra codes

- x 000 no extra code
- x 315 cable protector: coil
- x 316 cable protector: tube
- x 317 shielded connecting cable

Order code (1) - (2) - (3) - (4) - (5) - (6) - (7) - (8) - (9) / (10) , ...
 Order example 902005/40 - 390 - 1003 - 1 - 8 - 25 - 111 - 11 - 2500 / 000¹

1. List extra codes in sequence, separated by commas.

Stock versions:

(1)	(2)	(3)	(4)	(5)	(6)	(7)	(8)	(9)	(10)	Sales No.
902005/10	380	1003	1	6	100	104	11	2500	316	90/00065230
902005/10	380	1001	1	6	100	104	11	2500	316	90/00065232
902005/10	380	1001	1	6	250	104	11	2500	316	90/00065235
902005/20	130	1003	1	6	37	114	11	2500	315,317	90/00055644
902005/20	130	1001	1	6	37	114	11	2500	315,317	90/00055646
902005/30	380	1001	1	5.4	27.5	114	11	2500	316	90/00089972
902005/40	390	1003	1	8	25	111	11	2500	315,317	90/00055722
902005/40	390	1001	1	8	25	111	11	2500	315,317	90/00055732