

**JUMO GmbH & Co. KG**  
 Delivery address: Mackenrodtstraße 14,  
 36039 Fulda, Germany  
 Postal address: 36035 Fulda, Germany  
 Phone: +49 661 6003-0  
 Fax: +49 661 6003-607  
 e-mail: mail@jumo.net  
 Internet: www.jumo.net

**JUMO Instrument Co. Ltd.**  
 JUMO House  
 Temple Bank, Riverway  
 Harlow, Essex CM 20 2TT, UK  
 Phone: +44 1279 635533  
 Fax: +44 1279 635262  
 e-mail: sales@jumo.co.uk  
 Internet: www.jumo.co.uk

**JUMO Process Control, Inc.**  
 8 Technology Boulevard  
 Canastota, NY 13032, USA  
 Phone: 315-697-JUMO  
 1-800-554-JUMO  
 Fax: 315-697-5867  
 e-mail: info@jumo.us  
 Internet: www.jumo.us



# Process Connection Adapters

## JUMO PEKA

Type 409711

### General description

JUMO PEKA is an adapter system which connects the sensing unit (in this case, the pressure transmitter) to the process connection. The front-flush seal fitted in the adapter system is available in various materials such as FPM, EPDM or silicone.

The connection between the JUMO PEKA process connection and the appropriate process connection adapter is designed and certified according to EHEDG guidelines. The system is therefore highly suitable for an installation that meets all hygienic requirements. CIP or SIP cleaning in the pharmaceuticals/food and biotechnology sectors can be carried out without any problems.

### Order

In the data sheet for the pressure transmitter, for example:

JUMO dTRANS p30 - data sheet 40.4366

JUMO dTRANS p31 - data sheet 40.2050

JUMO dTRANS p02 - data sheet 40.4385

please select process connection 997 JUMO PEKA.

In the data sheet 90.2810 (Resistance thermometers for the food and pharmaceutical industries), please choose process connection 997 JUMO PEKA.



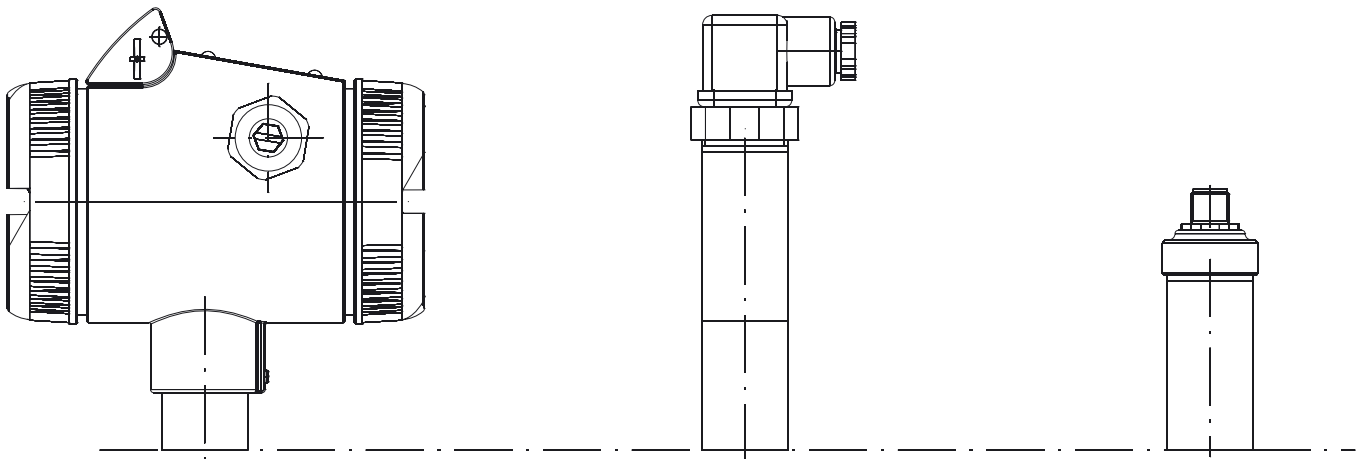
### Ordering the connection adapters

A suitable process connection adapter (the matching component for the pressure transmitter) and sealing material can be found in this data sheet.

### Stock items

Sales No.	Process connection adapter	Material
<b>Varivent</b>		
40/00446324	DN25/32	1.4435 / 316
40/00445046	DN40-125	1.4435 / 316
<b>Clamp</b>		
40/00445047	DN25/32/40	1.4435 / 316
40/00445037	DN50	1.4435 / 316
<b>Aseptic</b>		
40/00446458	DN40	1.4435 / 316
40/00445035	DN50	1.4435 / 316
40/00447555	NKS DN40	1.4435 / 316
<b>Weld-in socket</b>		
40/00447190	55 mm dia.	1.4435 / 316
<b>Seal</b>		
40/00446160	O ring 21 x 2.5	VMQ
40/00446162	O ring 21 x 2.5	EPDM
40/00446738	O ring 21 x 2.5	FPM
<b>Rear seal (optional)</b>		
40/00089095	O ring 26 x 2.5	VMQ

### Dimensions



Process connection 997

optionally available:  
seal 26 x 2.5,  
material: see page 1

27 a/f

11

You can order the PEKA process connection (997) together with the pressure transmitter, see data sheet

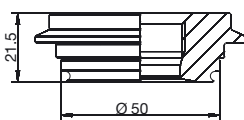
40.4385	JUMO dTRANS p02
40.2050	JUMO dTRANS p31
40.4366	JUMO dTRANS p30

or use the data sheet for ordering, see data sheet 90.2810.

Seal 21 x 2.5  
Material: see previous page

### Process connection adapters

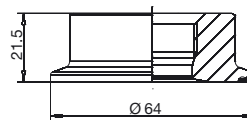
Varivent DN 25/32  
Part No. 00446324



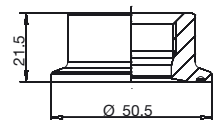
Varivent DN40-125  
Part No. 00445046



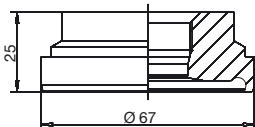
Clamp DN50  
Part No. 00445037



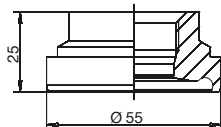
Clamp DN25/32/40  
Part No. 00445047



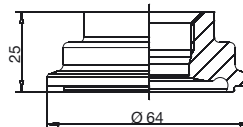
Aseptic DN 50  
Part No. 00445035



Aseptic DN40  
Part No. 00446458



Aseptic-NKS DN40  
Part No. 00447555



Weld-in socket  
Part No. 00447190

